

Waukesha
City Hall
Waukesha, WI

BWBR

1241 John Q Hammons Dr., Ste. 503
Madison, WI 53717
608.829.3701
bwbr.com

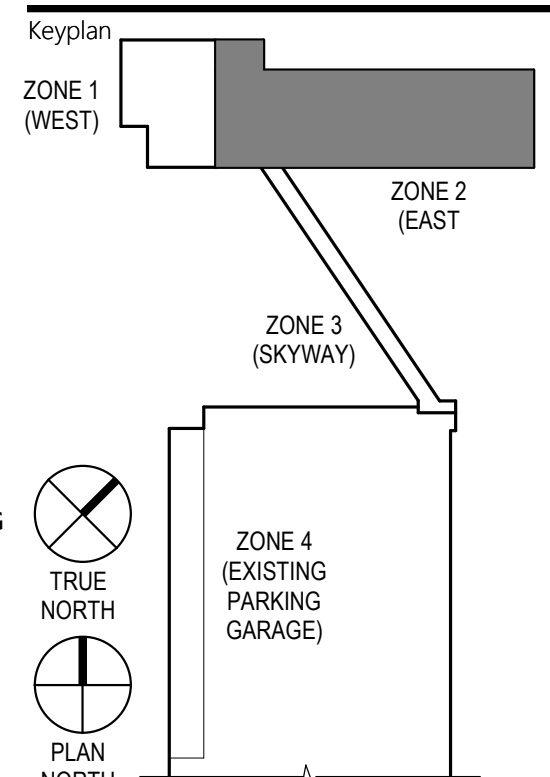
Consultants

This document may be an electronic file or may be printed from an electronic file provided to the user. It is the sole responsibility of the user to ensure that the content and quality is consistent with the content and quality of the original documents on file at BWBR.

Issued For

Item	Date
DD ISSUE	04/05/2019
50% CD ISSUE	05/17/2019
90% CD ISSUE	06/06/2019
CD ISSUE	07/10/2019

This Sheet may be a Reduced Copy.
The bar above is 1" long on a Full Size Sheet.
Drawing Scales apply to Full Size Sheets.



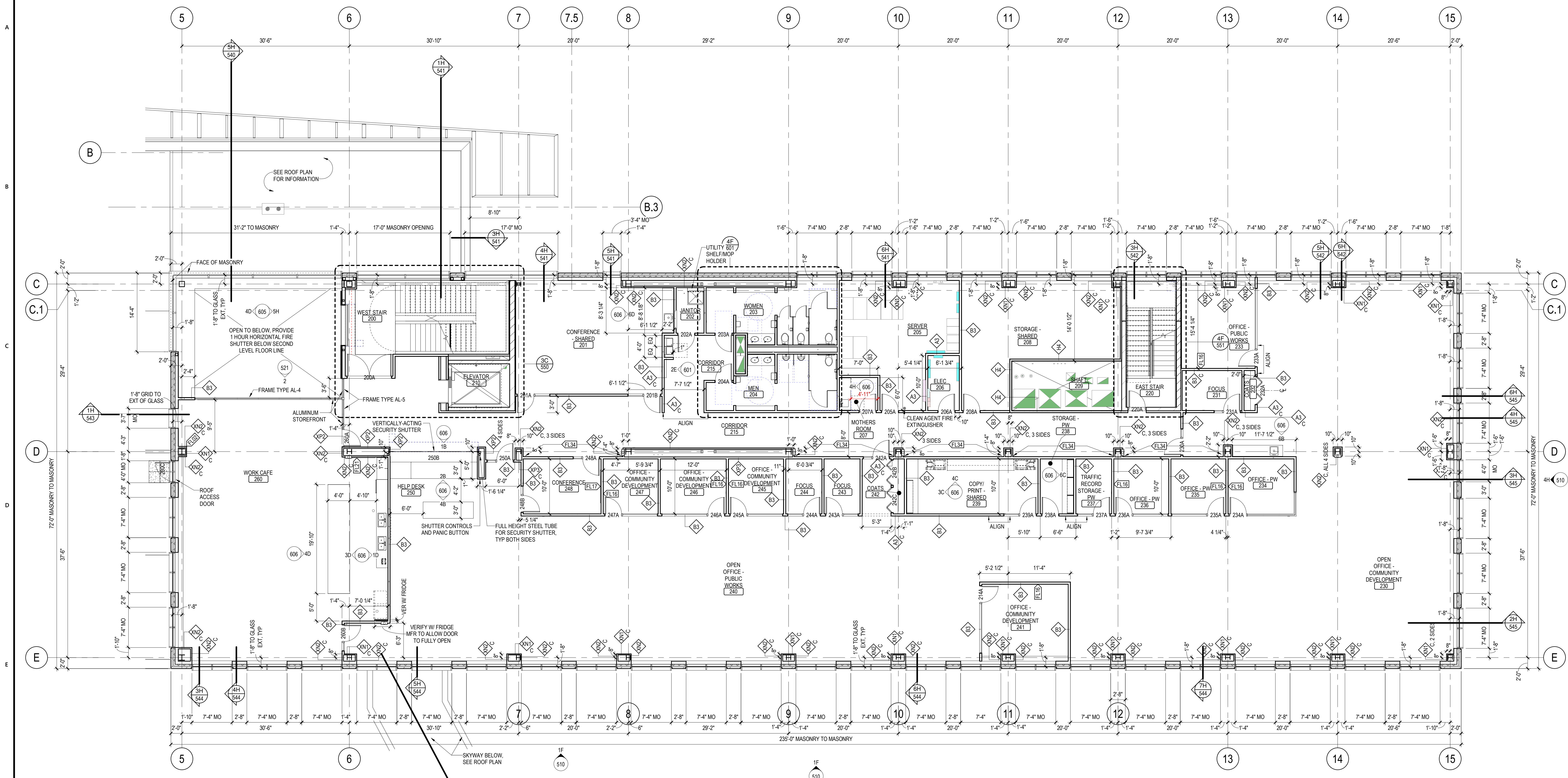
Comm. No. 3.2018006.01 Drawn PH/ARS/DJS

Sheet Title
SECOND LEVEL ZONE 2 - FLOOR PLAN

Sheet No.

402.FL

Copyright BWBR



1F FLOOR PLAN - SECOND LEVEL
402.FL 1/8" = 1'-0"

7/10/2019 3:55:50 PM