
Vote Absentee By Mail

All residents are asked to vote absentee by mail for the April 7th election. You can request an absentee ballot online at myvote.wi.gov. This is for your safety, the safety of our poll workers, and the safety of City employees.

The current deadline to request a ballot by mail is 5:00 pm tomorrow, Thursday, April 2nd.

If you have a completed absentee ballot you can put it in the mail in the envelope provided, OR, you can drop it off at the Schuetze Recreation Center, 1120 Baxter St, from 10am-2pm on Monday, April 6.

If you need further assistance please contact the Clerk's office at 262-524-3550.

[Vote Absentee by Mail](#)

Voting on April 7

Election Day, Tuesday, April 7, the City of Waukesha will have only one Election polling location. All residents will vote at the Schuetze Recreation Center, 1120 Baxter Street, from 7am-8pm. No other polling locations will be open on April 7th. Inside the Schuetze Recreation Center, residents will be directed via signage to their specific voting location inside the building.

All residents will need to [bring a Photo ID](#) to vote on Election Day. Residents will be able to register to vote at the Schuetze Recreation Center on Election Day with proper documentation.

Residents voting on Election Day are encouraged to bring their own black ball point pens, to wash their hands or use hand sanitizer upon entering and leaving, and to maintain social distancing while at the polling location. The City will have in place additional safety and cleaning measures.

Voting at the polling place on Election Day is not the recommended voting option. To help slow the spread of COVID-19, all residents are asked to please do their part and [vote absentee by mail](#).

Why Schuetze?

In order to conduct the election safely and efficiently, the City of Waukesha made a substantial effort to encourage voters to Vote Absentee by Mail. Currently, 36% of registered voters have requested a mailed ballot or voted in-person absentee. We are still strongly encouraging all voters to Vote Absentee by Mail. This is the safest method to cast your ballot in this year's election. You can [request an absentee ballot online](#).

By comparison during the last presidential primary, 6% of voters cast absentee ballots (majority in-person) and 53% voted at the polls on election day.

The decision to consolidate our election location to one location stemmed from several factors. In addition to a dramatic reduction in poll workers, we have also lost the majority of our Election Chiefs due to concerns about potential exposure. These are the people who have run each polling location, with many doing so for several years. As previously noted many of our election workers are those in the highest risk categories for substantial health impacts from COVID-19.

Additionally, many of Waukesha's poll locations are located in Fire Stations, as well as local churches. Some churches had indicated they prefer us not to run our election in those locations this year due to public health concerns. We also determined that it would not be prudent to use Fire Stations to conduct our election as our Firefighter/Paramedics are currently on the front lines of responding to the COVID-19 health crisis. These first responders are currently regularly coming into contact with patients that have the symptoms of the COVID-19 infection, or have confirmed cases of COVID-19. From a public health standpoint, it does not make sense to utilize fire stations as polling locations and potentially expose more of our population to the virus.

Lastly, we will be able to more effectively deploy our resources to one location to ensure a facility that is designed to protect public health. We have several measures that will be taken at the Schuetze Recreation Center in order to ensure a sanitary environment and reduce the chances the infection will be spread from one person to another. Among other items, voters will be spaced out at appropriate distances, workers will be provided

personal protective equipment, and voting stations will be set up to limit the poll workers contact with members of public. In addition, voting will be spaced out in various rooms throughout the building.

The City is not requesting volunteers for this election, as we would prefer to deploy current City employees to assist with managing the voting location.

Census Day

Today is Census Day! The City of Waukesha currently has a 50.6% Census response rate. The State of Wisconsin response rate is at 44.3%. Don't wait, respond today!

You can respond online, by phone, or by mail. <https://2020census.gov/en.html>

US Census

Business Resources

The City is compiling a list of resources for businesses impacted by COVID-19. We will continue to provide updates on this page as they are available.

Business Resources

Carry - Out Zones

New Carry Out Zones have been created downtown to make it even easier to continue to support your favorite downtown restaurants.

Downtown Carryout



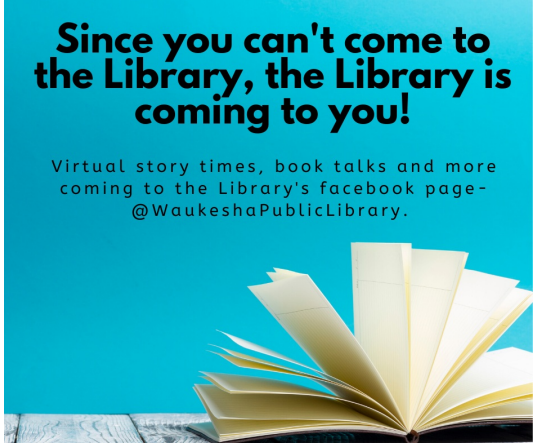
Virtual Library

The Waukesha Public Library is offering virtual story times, book readings and more every day. Make sure to visit the Library Facebook page.

[Library Facebook Page](#)

Since you can't come to the Library, the Library is coming to you!

Virtual story times, book talks and more coming to the Library's facebook page- @WaukeshaPublicLibrary.



Keeping Kids Captivated

Our Parks, Recreation and Forestry Department has put together a number of different activities to keep kids active at home. Check them out!

[Kids Activities](#)

Fun In Your Own Backyard
Activity Book



City of Waukesha
Parks, Recreation & Forestry

NATIONAL
Park Service

Continue to follow the City on Social Media for upcoming virtual events/activities!

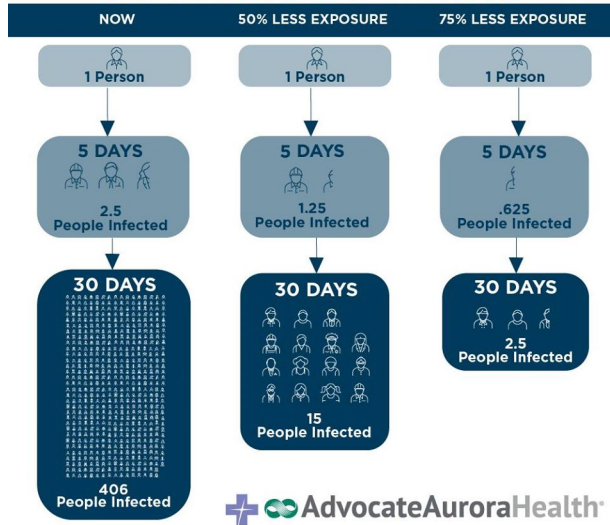
City Service Updates

All closures, cancellations and modifications to City services are being posted on our City website.

[City COVID-19 website](#)



THE POWER OF SOCIAL DISTANCING



COVID-19 SHOPPING TIPS

<p>WATCH WHAT YOU TOUCH</p> <p> Disinfect cart and basket handles</p> <p>Sanitize or use disinfectant wipes to clean cart and basket handles before use.</p>	<p>WASH YOUR HANDS</p> <p> Don't forget the soap</p> <p>Wash your hands with soap for at least 20 seconds.</p>
<p>SHARING IS CARING</p> <p> Be fair, please share</p> <p>Stockpiling can mean someone may not be able to buy what they desperately need.</p>	<p>PERSONAL HYGIENE</p> <p> Don't spread germs</p> <p>Cover your mouth and nose with a tissue when you cough or sneeze or use the inside of your elbow. Don't forget to wash your hands afterward.</p>
<p>SOCIAL DISTANCING</p> <p> Keep a personal radius</p> <p>Staying six feet away from others, even in the checkout line, does not make you unfriendly, it makes you considerate.</p>	<p>LIMIT NONESSENTIAL OUTINGS</p> <p> Consider others</p> <p>If you or someone you know is more vulnerable, take precautions. Outings, even to a grocery store, could put them at risk. You may bring home more than just groceries.</p>



Trusted Information Sources

- For updates on City of Waukesha cancellations, closures response - [City website](#)
- For local updates on COVID-19 cases and response - [County Health Department](#)
- For state updates on COVID-19 cases and response - [State Health Department](#)
- For national updates on the COVID-19 cases and response - [Centers for Disease Control and Prevention](#)



Encourage your friends and family to [sign up!](#)