

What's Up in Waukesha

Weekly news from the City of Waukesha



Recycle Right

It's important to recycle right and stick to the basic accepted recyclable items such as cardboard, paper, aluminium cans, metal containers, and plastic containers.

The following are the worst recycling contaminants. **Do not** put these in your recycle bin:

- Food waste and liquids
- Take-Out Containers such as pizza boxes and donut boxes
- Plastic bags- they get caught in the machinery
- Holiday lights, wires, or hoses- they get tangled in the machinery
- Batteries

Recycle Right



7 Aldermanic Positions

The City will have seven aldermanic positions on the April 7, 2020 ballot. The positions include Districts 1, 2, 3, 6, 7, 10, and 13 (view District map). If you are interested in running for one of these positions, you should contact the City's Clerk's office by December 1st at 262-524-3550, [e-mail clerktreas@waukesha-wi.gov](mailto:clerktreas@waukesha-wi.gov) or stop in at City Hall.

Elections

Thank you Veterans!

We want to say THANK YOU to all those who have served or are currently serving



our country.

Pictured are four of the over 15 employees of the City of Waukesha who are veterans or are currently serving.



Not in the Trash

Don't throw away your pumpkins. Instead, bring them to the Drop-Off Center for composting for **free** during the month of November.

[Drop-Off Center](#)



Don't get stuffed!

Earn that turkey and stuffing on Thanksgiving Day by participating in the Annual Thanksgiving Charity Boot Camp.

On Thanksgiving Day, Thursday, November 28, come to the Schuetze Recreation Center for a workout from 8am-9am. Just bring 5 or more non-perishable food items as a donation for your workout.

[Fall Activity Guide](#)

Summit Open

Summit Avenue was re-opened to traffic earlier this week.

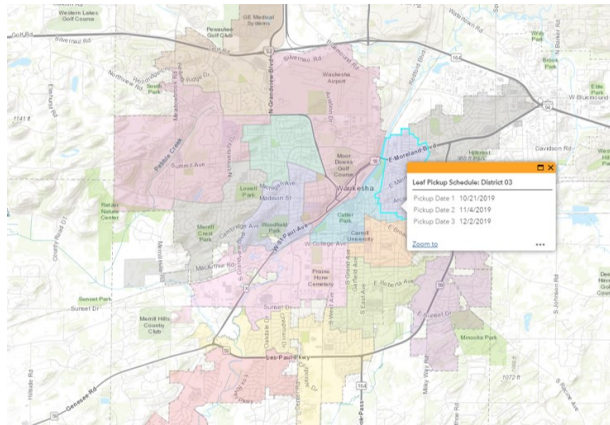
You can read updates on all City projects on our website.

[Construction Project Updates](#)



Leaf Collection

Wonder when your next leaf collection is taking place? Not sure what district you are in? Look it up by your address using our interactive leaf collection map.



Leaf Collection Map



Encourage your friends and family to [sign up!](#)